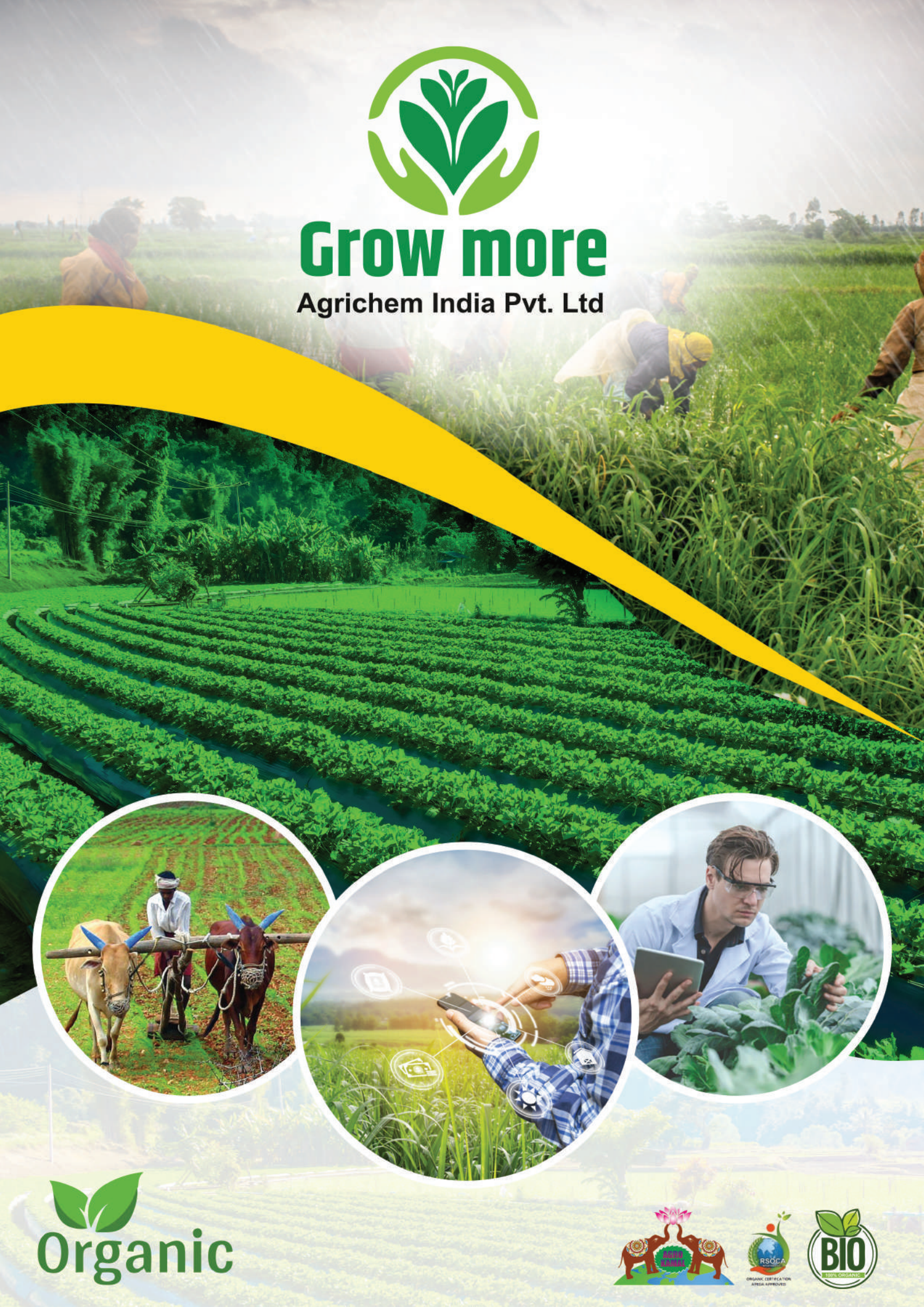
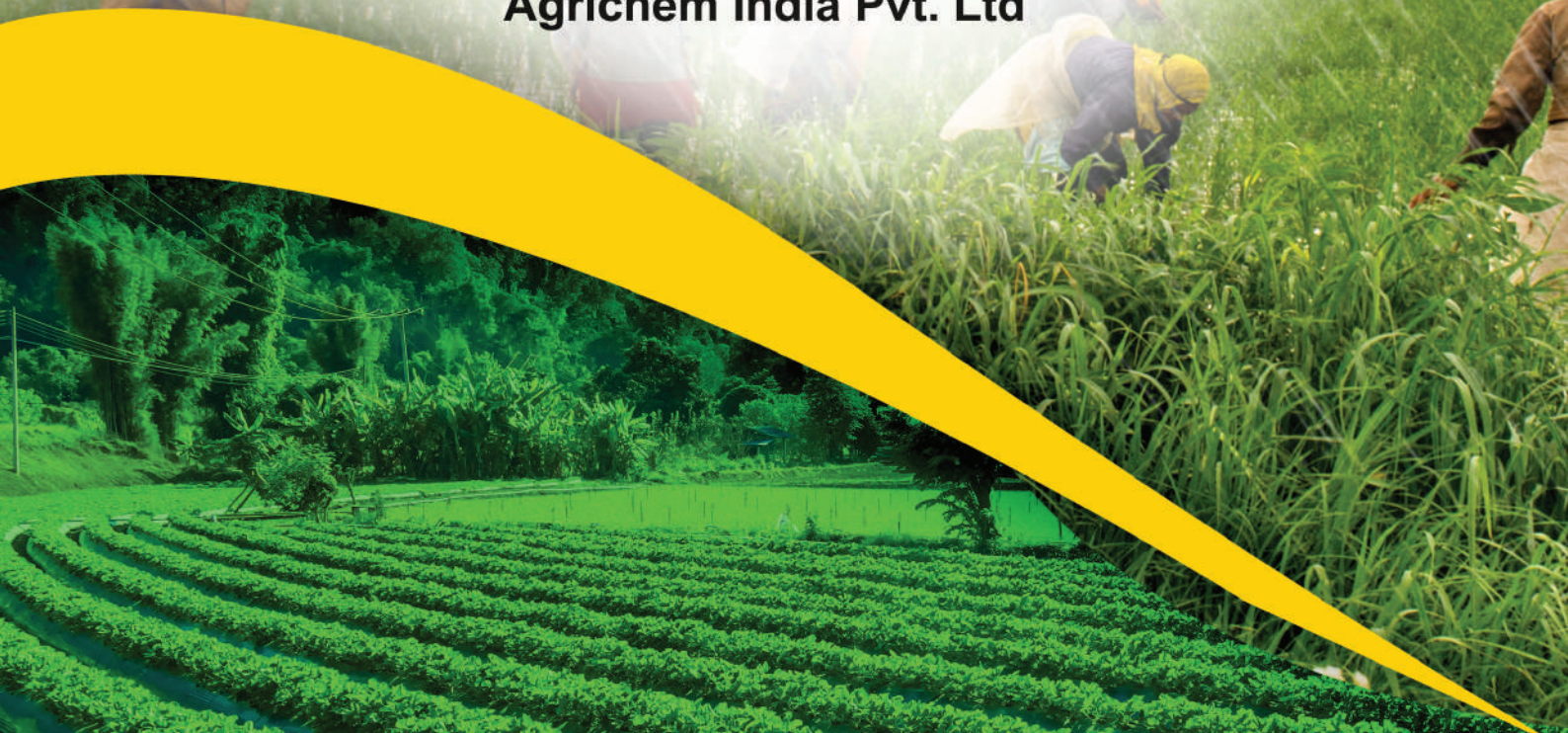




Grow more

Agrichem India Pvt. Ltd




Organic





ABOUT US

Grow More Agrichem India Pvt. Ltd. Where every concept has scientific base. Welcome to Grow More Agrichem India Pvt. Ltd. is a Ahmedabad based research company established in the year 2017, engaged in Manufacturing and Exporting of Complete Plant Nutrition and Total Protection Products such as Total Amino Acids, Organic Fertilizers, Humic Acid, Natural Bio Stimulants, Spray Adjuvants, Plant Growth Regulators, Soil and Water Conditioners, Bio Pesticides with certain Crop Specific Fertilizers too with ultramodern eco friendly nano technology.

The Ideology - Agriculture is the Back Bone of Human civilization, and we as an Agri Inputs manufacturing company, are the most we as a Farm Inputs providing company are trying our level the best to provide State-of-the-art nutrition solutions to various crops, and to provide eco friendly Plant Protection Measures.



OUR MISSION

To promote innovations in sustainable agriculture by providing package of practice.

Our dedication is to reach farmers and farming community and enhance agricultural output by reducing input cost (Fertilizers and Pesticide) with naturally available products with increase in farm productivity.



CORE VALUES

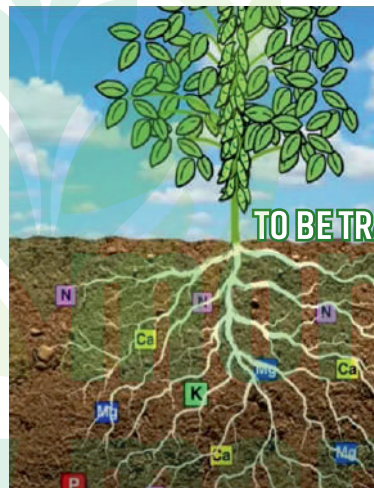
- Uncompromised Standard Quality; State-of-the-art products
- Affordable price
- Full support – After sales service.



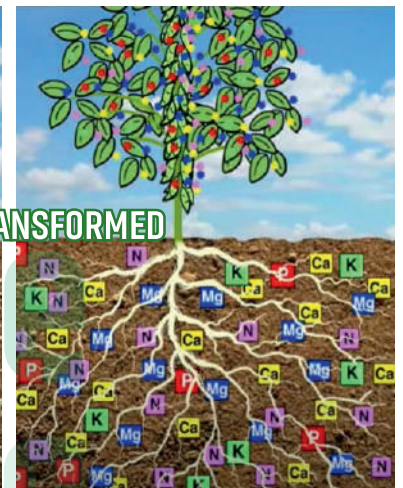
OUR VISION

"To remain customers driven company, delight customers with state-of-the art products and On Farm Consulting service, and thus be a Market Leader Complete Plant Nutrition company".

- Reducing input costing of farmers
- Increasing nutritional value in the crops
- No chemicals
- Increase farming produce
- Improving soil health
- Organic produce



1% of 394.6 Million Acres (present) Indian Agricultural Land



3.946 Million Acres of completely organic land (by 2025)

WHY? SACHET



GUARANTEED HIGH CFU COUNT



BENEFITS OF BACTERIA

Number of bacteria's available per square foot of agriculture Land defines the quality of Soil, More then Number of bacteria better will be the soil condition More bacteria will help plant to gather more nutrients from Soil, which will increase the photosynthesis process in plant More natural nutrients will help plants to sustain adverse climate Conditions, drought, heavy rain, winds etc These bacteria's form colonies near rhizobium of plant root System which helps plant to resist soil borne diseases/fungal Infections etc Bacteria's also help in retaining water in -soil for longer Duration, which help plant to sustain without water for longer Periods. Helping farmers to save water Less quantity of bacteria will not bear the desired results, Specially in soil where chemical fertilizers have been used in Recent past



ORGANIC FARMING

By adopting Organic Farming, there is absolutely no possibility of the risk of deadly diseases like Cancer in Humans

No genetic disorder/distortion occurs in Human Beings and Other Beings with organic Farming.

With organic farming, no poisonous impact happens to well water and other sources like well, ponds and rivers.

Using organic farming, our friendly insects and other organisms like Honeybee, Bumblebee, Earthworm etc does not get effected and they are safe.

There is increase in beneficial microorganisms like P.S Bacteria, Rhizobium Bacteria and other Nitrogen fixing bacteria with the use of Organic Farming due to which soil gets more fertile.

Crops and their products produced by Organic Farming does not contain any kind of poisonous/ harmful leftover.

By organic farming, no resistive capacitive of disease-causing insects increases.

By Organic Farming, Our environment does not get any kind of pollution via air pollution, pollution, water pollution and land pollution.

Organic pesticides and fertilizers used in organic farming do not cause any harmful health impact on farmers.

CHEMICAL FARMING

Insecticides and Pesticides used in Chemical Farming can cause Deadly dieses like cancer to Farmers and Human Beings.

Many kinds of Genetic Disorders occur in Human Beings and other beings with the use of Chemical Farming.

Various kinds of chemicals used in chemical farming has poisonous impact on all sources of water

Using Chemical Farming, harmful impact occur on our friendly insects and other organisms like Honeybee, Bumblebee, Earthworm etc, due to which important process like pollination and fertilization get effected.

There is a harmful impact on beneficial bacteria and other micro-organisms present in soil with the use of Chemical Farming.

Crops produced by chemical farming contain toxic chemicals remain in excessive quantity, due to which various kinds of diseases occur in Humans and otherorganisms.

With chemical farming, environment is polluted in various forms like air pollution, water pollution and land pollution.

Due to various types of toxic chemicals used in chemical farming, farmers suffer from symptoms like eye irritation, chest pain, vomiting etc.

GOOD WATER SOLUBILITY



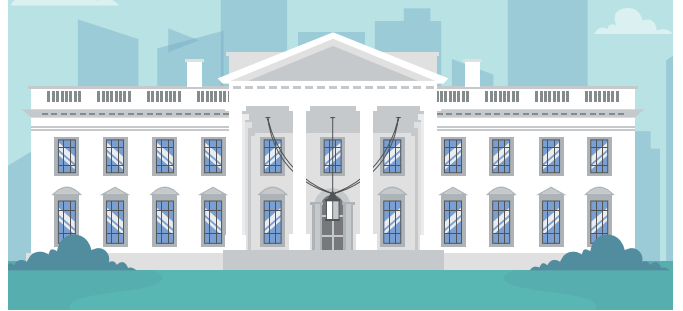
- Can be used easily in drip irrigation systems
- It won't clog the pipeline and taps in drip irrigation system
- Can also be used with Drone Sprayer system
- Good for Foiler spray
- Good solubility means lesser quantity of carrier material
- Good solubility means less wastage of product and better result

HILLY AREA BENEFITS



- Easy to transport
- Easy to Apply Easy to store
- Easy to carry on foot
- Better results
- Environment friendly Reduces wastages of packaging
- Reduced transportation on narrow hilly road

ADVANTAGE OF BIO SACHET FOR GOVERNMENT



- Reduction in Input Fertilizers cost to all farmers
- Oxygen percentage in air will increase
- Easy to handle and deliver in all regions at very low cost
- Soil water retention will increase
- Up to 30% of increase in agricultura output
- Plants strength and sustainability will be increased
- Increase in conversion of non farming land to farming land
- Less damage to crops due to un timely rainfall and other seasonal effects
- Soil PH & Texture level will be controlled and benefitted
- Food quality will be better due to reduction in chemical fertilizers
- Increase of Organic carbon in Soil
- No side effects on Animals or reduction in health issues of Animals caused due to chemical fertilizers
- Water pollution due to chemical fertilizers and pesticides will

DESERT FARMING LAND



- Easy to transport & Store
- Easy to Apply Good Shelf Life
- Easy to carry on Small trucks /cars
- Microbes that can sustain hot and dry climate
- Microbes that can store more nutrients with less water
- Increases water retention in soil
- Helps plant sustain in harsh Conditions
- Converts sand into fertile soil
- Economical then other alternatives Better results
- Environment friendly Reduces wastages of packaging

SNOW COVERED FARM LAND



- Easy to transport & Store
- Easy to Apply
- Good Shelf Life
- Easy to carry on Small trucks / Cars
- Microbes that can sustain Cold Weather
- Microbes that can store more
- Nutrients for winters to pass Better results
- Environment friendly
- Reduces wastages of packaging

SMALL ISLANDS FARMS / FOREST



- Easy to transport & Handle
- Easy Application
- Easy to store
- Good Shelf Life
- Easy to carry on boat / sea planes
- Better results
- Environment friendly
- Reduces wastages of packaging
- Reduced transportation to remote islands

ADVANTAGE OF BIO SACHET FOR ENVIRONMENT



- Water pollution will be reduced
- Air pollution will be reduced
- Acidification of the soil and mineral depletion of the soil can be controlled
- Organic farming will help many Animals, Birds, Insects to Survive
- Oxygen level will increase in air, carbon di oxide will reduce
- Water Retention in soil and strong roots of plants will help in reducing soil erosion

ADVANTAGE OF BIO SACHET TO FARMERS



- Cost of Input on Fertilizers will decrease up to 30%
- Output will increase by up to 30%
- Handling and storing of fertilizers cost will decrease
- Texture and organic carbon will increase
- Less damage to crops due to un timely rainfall and other seasonal effects
- No side effects on human body due to Pesticides
- Water retention in soil will increase, so less water be required for Farming

LAND LOCKED COUNTRIES



- Easy to transport & Handle
- Easy Application
- Easy to store
- Good Shelf Life
- Easy to carry small Planes / small trucks
- Better results
- 100% Organic Environment friendly
- Reduces wastages of packaging
- Reduced transportation to far away and remote place

SHELF LIFE

Shelf life is the length of time that a commodity may be stored without becoming unfit for use, consumption, or sale.

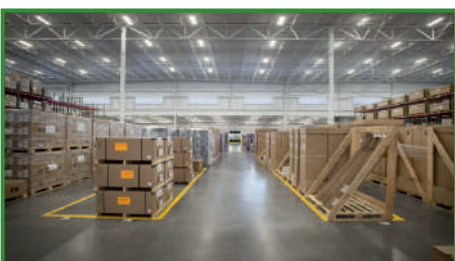
Powder Formulation Shelf Life is about 6 Months

Liquid Formulation Shelf Life is about 12 Months

Sachet Formulation Shelf Life is about 16 Months

LOW STORAGE COST

- LESS SPACE REQUIRED FOR STORAGE OF GOODS
- SAVING IN SPACE COST COMPARED TO POWDER AND LIQUID
- EASY TO TRACE AND DELIVER
- CAN BE STACKED ON RACKS TO SAVE MORE SPACE IN STORE
- IN MANY COUNTRIES / CITIES COST OF WAREHOUSES ARE VERY HIGH, SACHET SAVE ON COST AND BECOME'S MORE CORPETATIVE IN MARKET



ADVANTAGES OF BIO SACHET TO DISTRIBUTORS / DEALERS / RETAILERS



- New Advance low dose technology
- Good Margins, less wastage, easy to manage
- Bright Future as Bio / Organic is the future of farming, use of chemicals is declining day by day and most of the government are now encouraging farmers for organic farming
- Innovative distribution network through Franchising, a roven technique for accrued sales network, Grow More Agrichem India Pvt Ltd will help your team in developing system for your country
- Each Country 1 or 2 distributors subject to geographical strategy, we can also supplied in Private labeling
- Support for Online sale, Government sale, Bulk Sales etc.

LOW COST OF TRANSPORTATION



- Saving in fuel cost Less pollution due to many trucks
- Fast movement of material
- More Competitive in market
- Better margins
- More saving

COMPARISON BETWEEN CONVENTIONAL V/S BIO SACHET

	CONVENTIONAL		SACHET
	POWDER	LIQUID	
CFU Count	5x10 ⁷ /gm.	1x 10 ⁸ /ml.	1x 10 ¹² / gm
Shelf Life	6 Months	12 months	16 months to 24 months
Formulation	5 crore (Cells/gm.)	10 crore (Cells/ml.)	1 lakh Crore (Cell/ gm)
Serving Count	3.5 kg.	2-3 ltr.	1 BIO-Sachet
Cost	Higher Cost	Higher Varies	Lower Cost
Dosage	Ultimate Dosage Capacity	Varies According to area	Limited Dosage Capacity
Cost per Trillion Bacteria	3000 - 5000	4000 - 6000	Highly Cost Effective
Field Result	Slow	Slow	Fast
Compatibility with Chemical	Low	Low	NO
Carrier per Base Material	99%	99%	98%
Storage Cost	High	Very High	Very Low
Holding Cost	High	Very High	Very Low
Transportation Cost	High	Very High	Very Low

AgriChem India Pvt. Ltd.



FEATURES

- ✓ Higher CFU Count
- ✓ Higher Shelf Life.
- ✓ Easy To Transport, Easy To Handle
- ✓ Easy To Sell/trade Online/offline
- ✓ Good Water Solubility.
- ✓ Low Storage Cost.
- ✓ Low Transportation Cost.
- ✓ Reduce Water Pollution
- ✓ Reduce Air Pollution
- ✓ 100% Organic

PACKING SACHET

1 Packet Box
1 SACHET

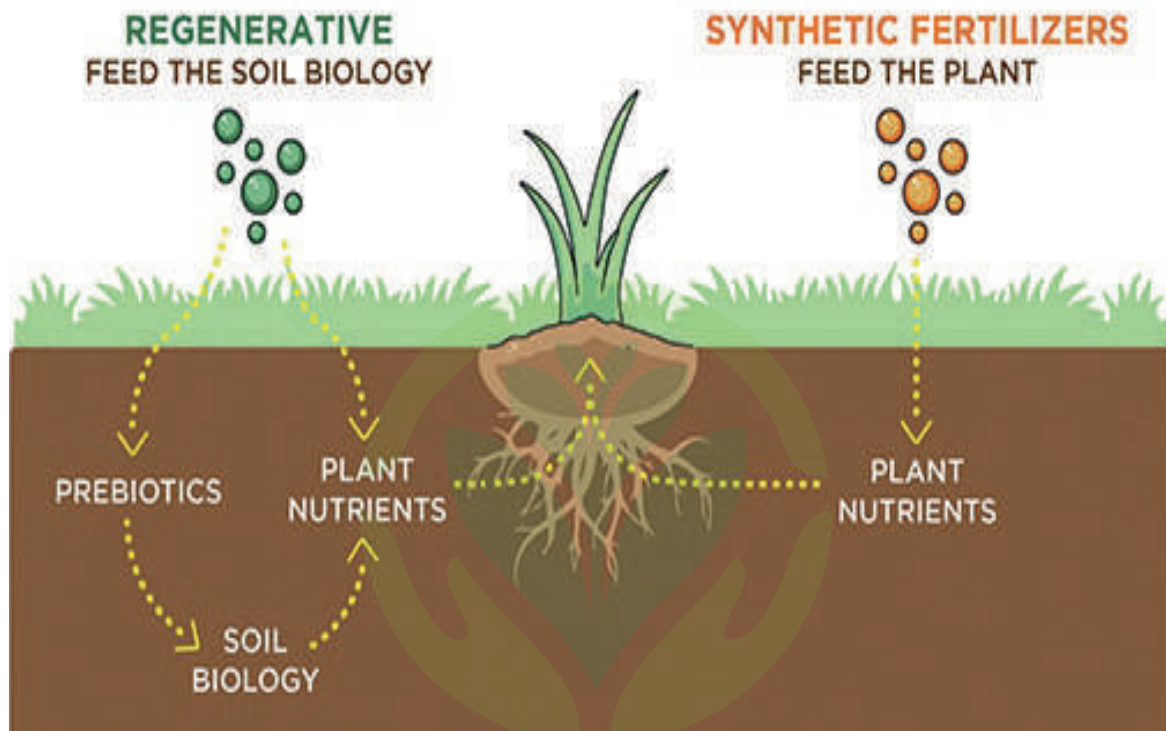
1 Box
20 PACKETS

1 Cartoon
4 BOX (80 sachets)



WHAT IS BIOFERTILIZER?

A biofertilizer is a substance which contains living micro-organisms which, when applied to seeds, plant surfaces, or soil, colonize the rhizosphere or the interior of the plant and promotes growth by increasing the supply or availability of primary nutrients to the host plant Fertilizers.



Grow more

BIOFERTILIZERS ARE IMPORTANT FOR THE FOLLOWING REASONS

- Biofertilizers improve the soil texture and yield of plants.
- They do not allow pathogens to flourish.
- They are eco-friendly and cost-effective.
- Biofertilizers protect the environment from pollutants since they are natural fertilizers.
- They destroy many harmful substances present in the soil that can cause plant diseases.
- Biofertilizers are proved to be effective even under semi-arid conditions.

FIRST TIME IN THE WORLD BIO FERTILIZER, BIO FUNGICIDES AND BIO PESTICIDES IN NANO BIO SACHET FORM.

WE ARE PROUD TO INTRODUCE GROUND BREAKING – REVOLUTIONARY TECHNOLOGY IN AGRICULTURE SECTOR.

GROW MORE WATER SOLUBLE SACHETS IN DELIVERING MORE THAN 1 TRILLION PLUS MICROBES.

METHOD OF APPLICATION & DOSAGE FOR BIO SACHET

FOLIAR SPRAY:

- Dissolve 1 Sachet in 1-3 liters of clean water (keep it for 30 minutes – for activation).
- Dilute it with up to 200 liters of water (as per requirement) & apply on the plants and leaves both sides.

DRIP / FLOOD IRRIGATION/ DRENCHING:

- Dissolve 1 - 2 Sachet in 5-10 liters of clean water, allow it to dilute and activate for 30 minutes.
- Mix the solution in up to 100 to 200 liter of water and apply in the soil up to 1 acre.

SEEDLINGS TREATMENT:

- Dissolve 1 Sachet in 5-10 liters of clean water (keep it for 30 minutes - for activation).
- Dip seedling root for about 10-15 minutes in the suspension and transplant immediately.

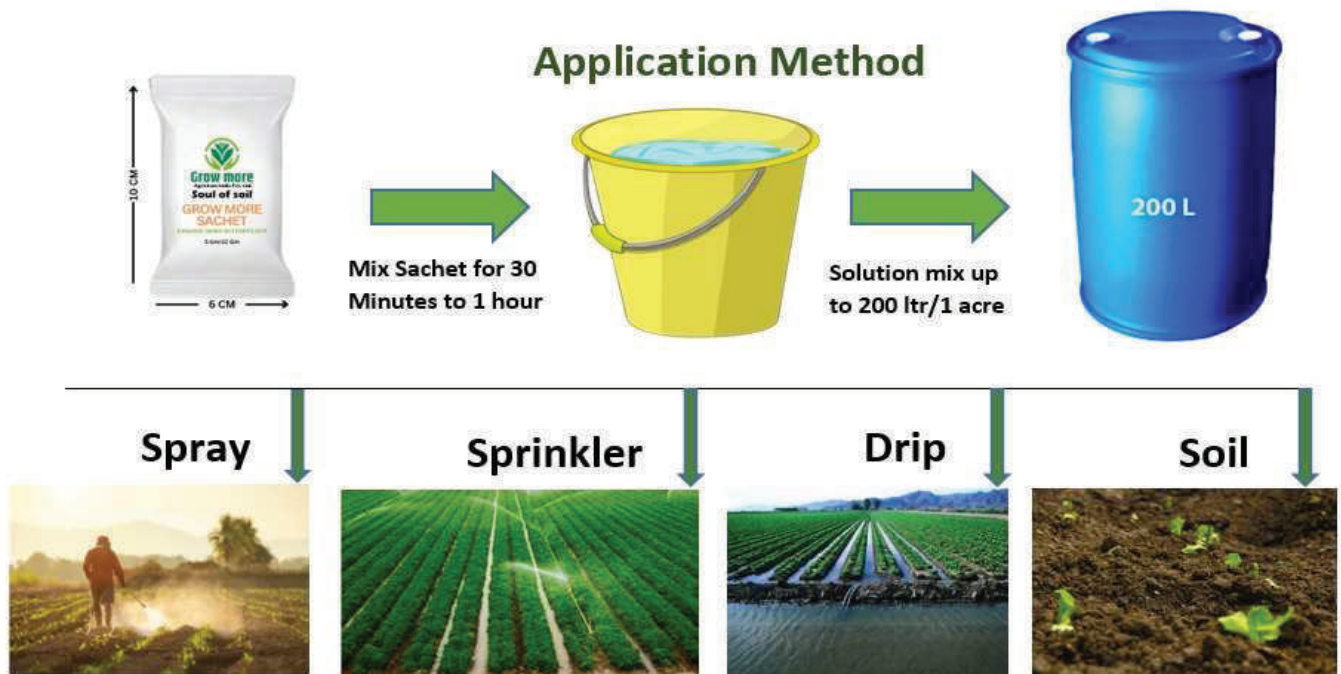
NURSERY SEED BED PREPARATION:

- Dissolve 1 Sachet in 5-10 liters of clean water, allow it to dilute and activate for 30 minutes.
- Mix the solution in up to 200 liters & spray it on 500 kg of well decomposed farm yard manure/compost/vermicompost and broadcast in an up-to acre.

COMPATIBILITY

- Compatible with organic manures and bio-fertilizers.
- Don't mix with chemical Antibiotics.
- It can be used alternatively with insecticides & fungicides / chemical fertilizer practices.
- Avoid mixing with Bordeaux mixture, Antibiotic and streptomycin.

NOTE - APPLY REGULARLY 15 DAYS INTERVAL FOR BETTER RESULT AND INCREASE FERTILITY AND DEVELOP SOIL STRUCTURE.



BIO FERTILIZER



GROW N.P.K

GROW NPK is a consortia of Nitrogen, Phosphorus, and Potash bio-fertilizers. It increases the availability of Nitrogen, phosphorus, and potassium in the crops. Grow NPK provides the major nutrients to the soil which results in higher yield. It efficiently fixes atmospheric nitrogen, solubilizes insoluble and chemically fixed phosphates and has the ability to mobilize and solubilizes soil potash and insoluble potash compounds thus making all three of these essential nutrients available to the plant in a ready, available form.

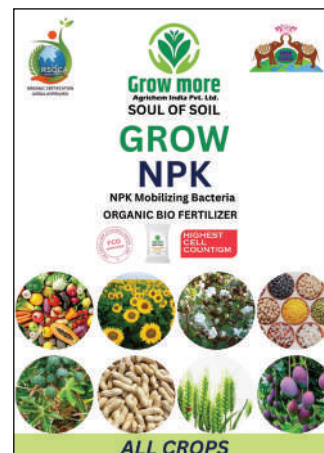
BENEFITS OF GROW N.P.K

- Increase crop yield by 20-30%.
- Restore natural soil fertility.
- Replace chemical nitrogen and phosphorus by 25%.
- Stimulate plant growth.
- Activate the soil biologically.
- Provide protection against drought and some soil borne diseases.
- Improve physical and chemical properties of soil with aeration and water retention.
- Reduced disease infestation up to some extent.
- Cost saving and reduce dosage per acre of nitrogenous, phosphorus and potash fertilizer.

WHEN TO BE USED

- Soil Preparation
- Seed Treatment
- COA / MSDS REPORT / TEST REPORTS
- As Per Recommended Crop Schedule

CERTIFICATES AVAILABLE



ALL CROPS

AVAILABLE VARIANT

5 GM / 10 GM / 100 GM NANO POWDER FORMULATION

DOSE : 1 TO 2 SACHET FOR 1 ACER / 2 TO 3 SACHET FOR 1 HECTOR

(BIO sachet Over dose has no side effects)

APPLICATION METHOD HOW TO USE REFER PAGE NO. 8



GROW POTASH (K. M. B)

Grow Potash sachet contains Potassium Mobilizing Bio Fertilizers bacteria that are capable of solubilizing inorganic Potassium from insoluble compounds and providing it for plant uptake. These microorganisms are commonly known as potassium solubilizing bacteria or potassium dissolving bacteria.

BENEFITS OF GROW POTASH (K. M. B)

- With the use of Grow-Potash, the structure, shape, color and brightness of output gets increased in crop.
- Increase in photosynthesis process of crop.
- Through the transfer of glucose in various parts of plants and trees, it helps in balanced growth and development of plants and crops.
- Helps in increasing the effect of enzymes which are used in important Bio-Chemicals reactions.
- That convert insoluble potassium, aluminum silicate into soluble potash form & make available to the plant.
- By using Grow Potash, the use of chemical fertilizers in soil, for fulfilment of potash requirement, can be reduced by upto 60%.

WHEN TO BE USED

- Soil Preparation
- Seed Treatment
- As Per Recommended Crop Schedule

AVAILABLE VARIANT

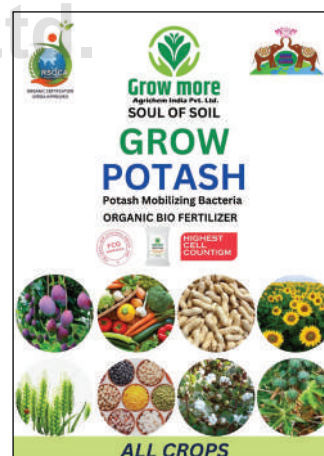
5 GM / 10 GM / 100 GM NANO POWDER FORMULATION

(BIO sachet Over dose has no side effects)

DOSE :

1 TO 2 SACHET FOR 1 ACER / 2 TO 3 SACHET FOR 1 HECTOR

APPLICATION METHOD HOW TO USE REFER PAGE NO. 8



ALL CROPS



GROW PHOS (P.S.B)

Grow Phos Sachet contains phosphate solubilizing bacteria that are capable of solubilizing inorganic Phosphorous from insoluble compounds and providing it for plant uptake. These microorganisms are commonly known as Phosphorous solubilizing bacteria or Phosphorous dissolving bacteria. Phosphorous Solution Bio Fertilizer reduces the need for synthetic phosphate fertilizers.

BENEFITS OF GROW PHOS (P.S.B)

- They also decompose the organic residue by immobilization and mineralization thus maintaining equilibrium with soil solution pools.
- Phosphorus is one of the major plant nutrients in the soil.
- It is a constituent of plant cells, essential for cell division and development of the growing tip of the plant.
- For this reason it is vital for seedlings and young plants. That help in crop growth & increasing productivity.
- PSB fertilizer can facilitate the transformation of insoluble to available in the soil; this mechanism will increase available concentration and soil availability to crops, contributing to crop growth and yield.

WHEN TO BE USED

- Soil Preparation
- Seed Treatment
- As Per Recommended Crop Schedule

CERTIFICATES AVAILABLE

- COA / MSDS REPORT / TEST REPORTS

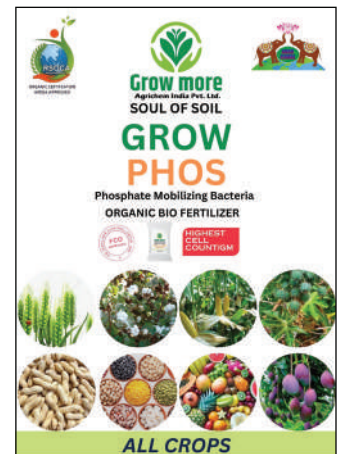
AVAILABLE VARIANT

5 GM / 10 GM / 100 GM NANO POWDER FORMULATION

DOSE : 1 TO 2 SACHET FOR 1 ACER / 2 TO 3 SACHET FOR 1 HECTOR

(BIO sachet Over dose has no side effects)

APPLICATION METHOD HOW TO USE REFER PAGE NO. 8



GROW ZINC (Zn)

Grow Zinc Sachet contains ZINC SOLUBLIING BACTERIA one of the micro nutrients essential for several plant development processes, including growth hormone production and inter-node elongation. Zinc Solution Bio Fertilizers (Z.S.B.) contains bacteria that are capable of solubilizing inorganic zinc and make it bio-available for plant consumption. It also reduces the need for excessive synthetic zinc fertilizers in the soil.

BENEFITS OF GROW ZINC (Zn)

- Specially control the khaira disease in paddy.
- Increase crop yield and the quality of the produce.
- Improve the physiological activities of plants resulting increase in yield.
- Improve soil health and activate hormones.
- Improve roots and plant growth.

WHEN TO BE USED

- Soil Preparation
- Seed Treatment
- As Per Recommended Crop Schedule

CERTIFICATES AVAILABLE

COA / MSDS REPORT / TEST REPORTS

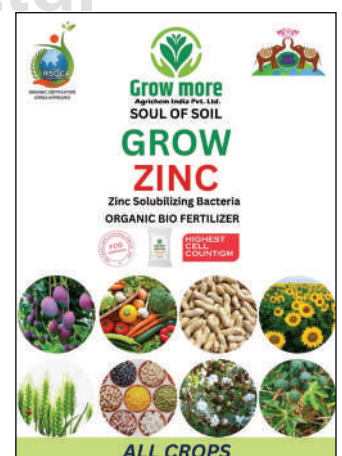
AVAILABLE VARIANT

5GM / 10 GM / 100 GM NANO POWDER FORMULATION

DOSE : 1 TO 2 SACHET FOR 1 ACER / 2 TO 3 SACHET FOR 1 HECTOR

(BIO sachet Over dose has no side effects)

APPLICATION METHOD HOW TO USE REFER PAGE NO. 8





GROW NITRO (COMBINATION OF NITROGEN FIXATION BACTERIA)

Grow Nitro sachet contains Azotobacter facilitates the availability of certain nutrients like Carbon, Nitrogen, Phosphorus and Sulphur by accelerating the mineralization of organic residues in soil and avoiding the uptake of heavy metals. Azospirillum promote plant growth through a variety of mechanisms. Many Affected roots frequently grow more branches and fine root hairs, which may help the plants acquire water and nutrients more efficiently.

BENEFITS OF GROW NITRO

- Fixes the atmospheric nitrogen up to 10 -15 kg per acre into the soil & thereby reduces the nitrogen requirement of the crop.
- It is a free living nitrogen fixing bacterium for non-leguminous crop.
- Promotes root proliferation & increases crop yield by up to 30 %.
- Produces growth promoting substances (PGPR)
- It produces antibiotics thereby suppresses a variety of root pathogens.
- It is a major nitrogen fixing bacteria from atmosphere for all crops other than pulses.

WHEN TO BE USED

- Soil preparation
- After Plantation / soying
- crop growth stage as per recommended crop schedule

CERTIFICATES AVAILABLE

COA / MSDS / TEST REPORTS

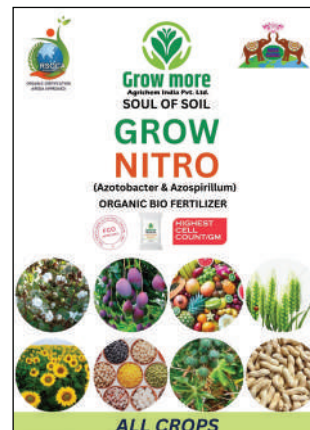
AVAILABLE VARIANT

5GM / 10 GM / 100 GM NANO POWDER FORMULATION

DOSE : 1 TO 2 SACHET FOR 1 ACER / 2 TO 3 SACHET FOR 1 HECTOR

- (BIO sachet Over dose has no side effects)

APPLICATION METHOD HOW TO USE REFER PAGE NO. 8



GROW ACETO

Grow Aceto sachet contains Acetobacter spp bacteria which has the ability to colonize the plant roots and fixing atmospheric nitrogen. It is especially beneficial for sugarcane, sweet potato and sweet sorghum plantation as it activates the soil biologically and growth stimulates plant.

BENEFITS OF GROW ACETO

- Enhance nitrogen fixation in soil and availability of nitrogen in sugarcane.
- Produce growth compounds like Gibberellins, Biotin, Nicotinic acid which enhances the plant vigor and growth.
- More sugar concentrate producer.

WHEN TO BE USED

- Soil Preparation
- Seed Treatment
- As Per Recommended Crop Schedule

CERTIFICATES AVAILABLE

COA / MSDS REPORT / TEST REPORTS

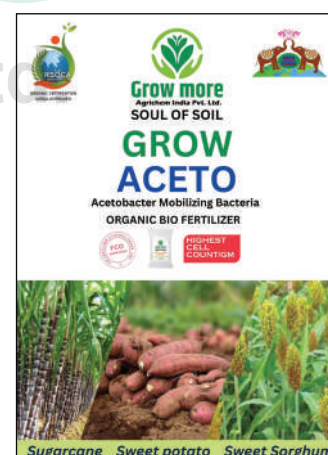
AVAILABLE VARIANT

5 GM / 10 GM / 100 GM NANO POWDER FORMULATION

DOSE : 1 TO 2 SACHET FOR 1 ACER / 2 TO 3 SACHET FOR 1 HECTOR

- (BIO sachet Over dose has no side effects)

APPLICATION METHOD HOW TO USE REFER PAGE NO. 8





GROW RHIZO

Grow Rhizo Sachet contains symbiotic Rhizobium spp. bacteria which is the most important nitrogen-fixing organism. These organisms have the ability to drive atmospheric Nitrogen and provide it to plants. It is recommended for crops such as Groundnut, Soybean, Red-gram, Green-gram, Black-gram, Lentil Cowpea, Bengal-gram and Fodder legumes, etc.

BENEFITS OF GROW RHIZO

- Rhizobium is relatively more effective and widely used bio-fertilizer.
- Rhizobium, in association with legumes, fixes atmospheric N.
- The legumes and their symbiotic association with the Rhizobium bacterium result in the formation of root nodules that fix atmospheric N.
- Successful nodulation of leguminous crop by Rhizobium largely depends on the availability of a compatible strain for a particular legume.
- Rhizobium population in the soil is dependent on the presence of legumes crops in field. In the absence of legumes the population of Rhizobium in the soil diminishes.

WHEN TO BE USED

- Soil Preparation
- Seed Treatment
- As Per Recommended Crop Schedule

AVAILABLE VARIANT

PER ACRE REQUIRED : 10 gm nano powder formulation

RECOMMENDED : 20 gm,

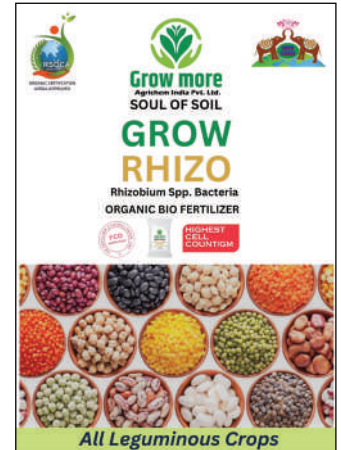
(Bio capsule over dose has no side effects)

DOSE : 1 TO 2 SACHET FOR 1 ACER / 2 TO 3 SACHET FOR 1 HECTOR

CERTIFICATES AVAILABLE

- COA / MSDS REPORT / TEST REPORTS

APPLICATION METHOD HOW TO USE REFER PAGE NO. 8



GROW SULPHAR

Grow Sulphar sachet contains Sulphur-solubilizing bacteria containing bio-fertilizer improves the microbial load of sulphur-solubilizing bacterial strains in the soil. Hence, it induces sulphur conversion in the soil and increases crop yield. Sulphur oxidizers work to convert elemental sulphur into plant-available sulphate. Sulphur bacteria form a variety of mutualistic. The bacterial strains produce active cells that grow, multiply, and mobilize the insoluble sulphur present in the soil. Hence, it ultimately increases and improves the uptake of sulphur and makes it readily available to the plant.

BENEFITS OF GROW SULPHAR BIO FERTILIZER

- Hence it ultimately and appreciatively increases and improves the uptake of Sulphur and makes it readily available to the plant.
- It helps in the chlorophyll formation that allows photosynthesis, by which plants produce starch, sugars, oils, fats, vitamins and other compounds.
- Sulphur improves plant's winter hardiness, Enhanced Nutrition to all Crops.
- Effective Anti Fungal Properties, Directly reaches to the crop plant via roots.

WHEN TO BE USED

- Soil Preparation
- As Per Recommended Crop Schedule

AVAILABLE VARIANT

5 GM / 10 GM / 100 GM NANO POWDER FORMULATION

(Bio sachet Over dose has no side effects)

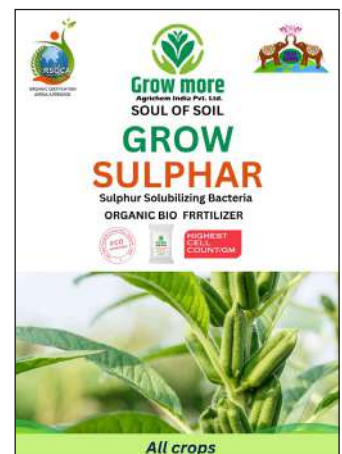
CERTIFICATES AVAILABLE

- COA / MSDS REPORT / TEST REPORTS

DOSE :

1 TO 2 SACHET FOR 1 ACER / 2 TO 3 SACHET FOR 1 HECTOR

APPLICATION METHOD HOW TO USE REFER PAGE NO. 8





GROW SILBAC

Silicon slow-release fertilizers: steady nourishment for stronger, resilient plants. Boosts yield & quality while being eco-friendly. Perfect for diverse crops

BENEFITS OF GROW SILBAC

Slow-Release Formula: Silicon slow-release fertilizers are designed to provide a steady and prolonged release of silicon over time, ensuring a consistent supply to plants.

Improved Plant Health: Silicon is known to enhance plant health by strengthening cell walls, making plants more resistant to pests, diseases, and environmental stresses.

Increased Yield and Quality: Regular application of silicon slow-release fertilizers can lead to improved crop yields as well as better quality of fruits, vegetables, and other agricultural produce.

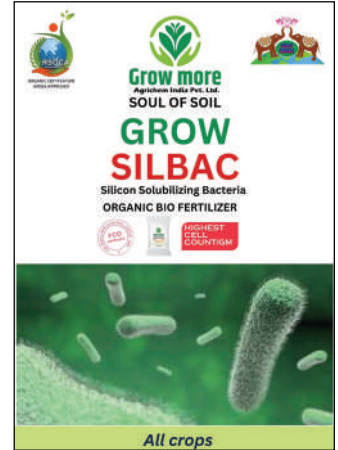
Enhanced Nutrient Uptake: Silicon can facilitate better uptake and utilization of other essential nutrients, leading to overall improved plant growth and development.

Long-Lasting Effects: Due to their slow-release nature, the benefits of silicon fertilizers can last for an extended period, reducing the frequency of applications needed

Environmental Benefits: Silicon slow-release fertilizers can contribute to sustainable agriculture by reducing nutrient leaching and runoff, thus minimizing environmental pollution.

Compatibility: These fertilizers can often be used in combination with other fertilizers or integrated into existing agricultural practices without causing adverse effects.

Versatile Use: Suitable for various crops, including but not limited to rice, wheat, maize, soybeans, and other field crops, as well as fruits, vegetables, and ornamental plants



WHEN TO BE USED

- As per Recommended Crop Schedule

CERTIFICATES AVAILABLE

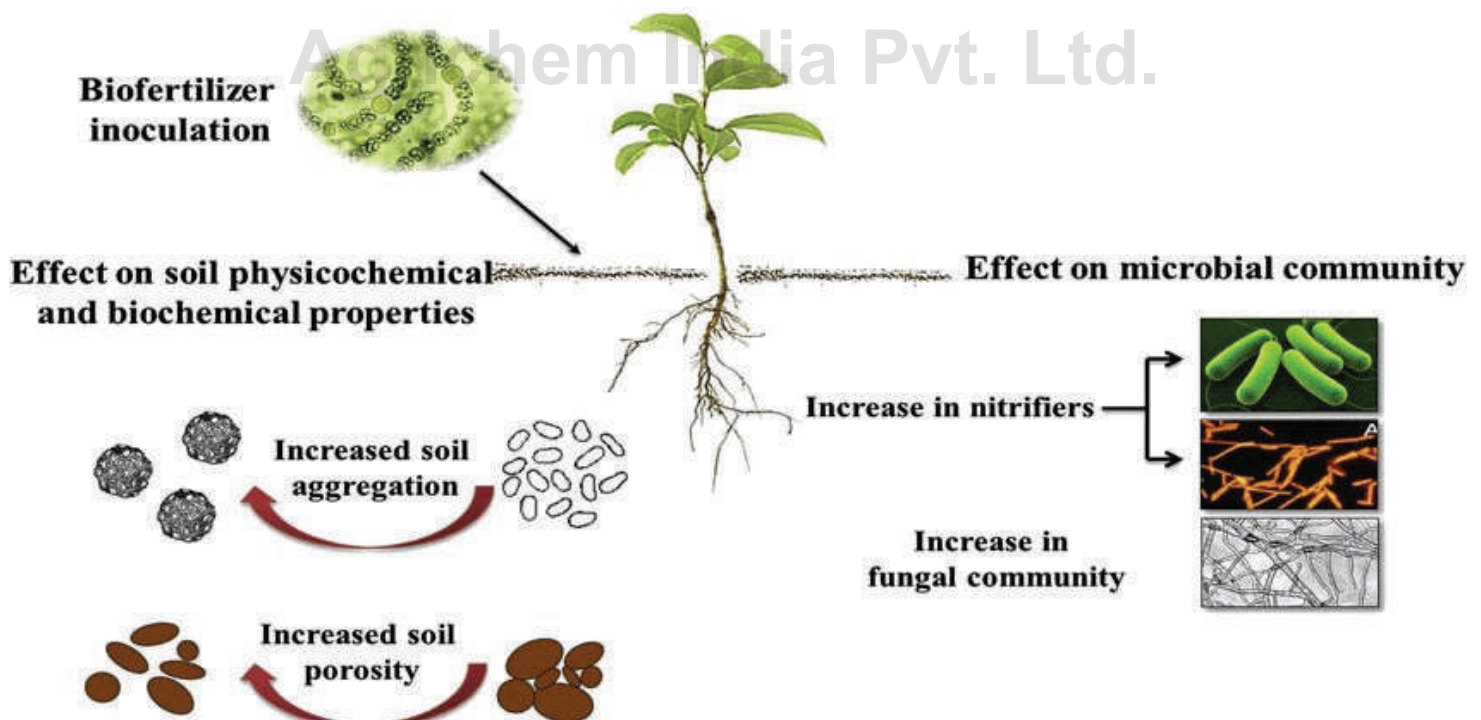
- COA / MSDS REPORT / TEST REPORTS (BIO sachet Over dose has no side effects)

AVAILABLE VARIANT

- 5 GM / 10 GM / 100 GM NANO POWDER FORMULATION

DOSE : 1 TO 2 SACHET FOR 1 ACER / 2 TO 3 SACHET FOR 1 HECTOR

APPLICATION METHOD HOW TO USE REFER PAGE NO. 8



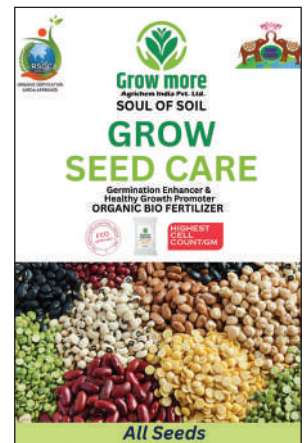


GROW SEEDS CARE (INNOVATIVE TECHNOLOGY FOR SEED CARE)

Grow Seed care sachet contains unique A unique formulation for advance seeds treatment its combination of Trichoderma harzianum & Bacterial species culture with their metabolites, formulated in high enriched organic base. This base serves as a source of nutrients for early establishment of beneficial microbes & also as a rich source of plant growth promoting substances.

BENEFITS OF GROW SEEDS CARE

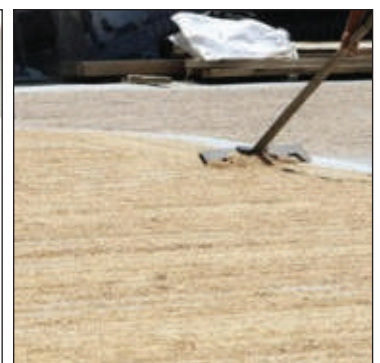
- Protects germinating seeds and seedlings against soil and seed borne pathogens/insects.
- Enhance Seed germination & Early and uniform establishment and growth
- Enhances nodulation in legume crop,
- Uniform crop stand, even in adverse conditions (less/high moisture)
- Improve maximum percentage of Seed Germination, growth & health of seedlings
- Better establishment of seedlings, protect seedlings from bacterial & fungal diseases
- Increasing the biomass and also Improve the final yield



METHOD OF APPLICATION / PROCEDURE FOR SEED TREATMENT

SEED TREATMENT:

- Take 3-5 litres of clean water in a clean utensil/vessel, add Grow Seed Care Sachet, Stir is well. – Solution is ready. (Activation is done in 30 minutes)
- ↓
- Add seeds in the utensil/vessel (allow it to soak for 20-30 minutes) (This process is seed preparation)
- ↓
- Allow seed to dry in shade for 15-20 mins
- ↓
- Sow seeds in the soil
- ↓
- Add water in remaining solution, as per requirement. (for further dilution) (1 sachet is sufficient for upto 100 litres.
- ↓
- Spray above diluted liquid in the soil (Process is bed preparation for seeds)



DOSE : 1 SACHET FOR 1 ACER / 2 TO 3 SACHET FOR 1 HECTOR

- (Bio sachet Over dose has no side effects)

NEMATOCIDE



GROW NIMATOCARE (VERTICILLIUM CHLAMYDOSPORIUM)

NIMATOCARE Verticillium chlamydosporium 1% WP is a natural and eco-friendly Bio-Insecticide/ Bio- Nematicide specifically designed to safe guard crops from harmful nematodes. Infused with beneficial microorganisms, it provides a targeted and efficient control method, ensuring nematode populations are suppressed while preserving other beneficial insects in the ecosystem.

MODE OF ACTION

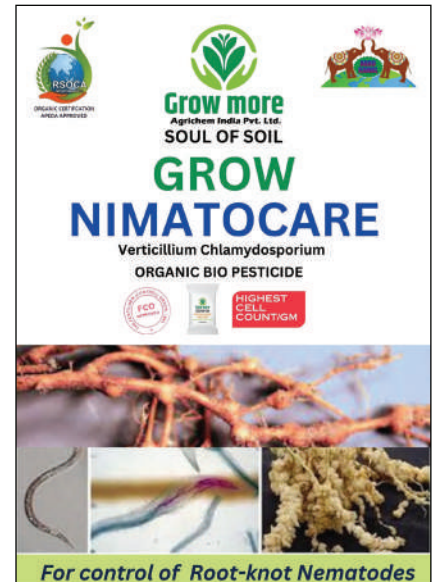
•**Colonization:** Verticillium chlamydosporium initially colonizes the soil and the root zone of plants where the target nematodes reside. The fungus forms a symbiotic relationship with the plant, known as an endophytic relationship, by entering the plant's tissues without causing any harm.

•**Infection:** Once inside the plant, the fungus grows and multiplies, producing specialized structures called chlamydo spores. These chlamydo spores are the infectious stage of the fungus and are responsible for parasitizing nematodes.

•**Nematode Parasitism:** When nematodes come into contact with the chlamydo spores, the fungus attaches to their cuticle (outer covering). The chlamydo spores then germinate, producing hyphae that penetrate the nematode's body, gaining entry to the nematode's internal tissues.

•**Nematode Death:** Inside the nematode, the hyphae proliferate and grow, causing the nematode to become weakened and eventually killed. The fungus utilizes the nematode's tissues as a nutrient source to support its own growth and development.

•**Reproduction and Spread:** After the nematode is killed, the fungus completes its life cycle and produces new chlamydo spores, ready to infect other nematodes in the soil, continuing the biocontrol process.



BENEFITS OF NIMATOCARE

- Natural and eco-friendly Bio-Insecticide/ Bio-Nematicide.
- Effective control of harmful nematodes in soil.
- Preserves beneficial insects and maintains ecological balance.
- Convenient wettable powder formulation for easy application.
- Promotes sustainable agriculture and healthier crop growth.

TARGET CROPS

potatoes, greens vegetables, melons, lettuce , guava, Pea, Beans, Pulses, Oil-seeds, Tomato, Cucurbits, Potato, Mango, Ber, Grapes, Citrus, Ginger, Cereal, Pomegranate, Apple, Peach, Plum, Banana, Tea, Coffee, Plantation crop, and Cumin, Medicinal & Aromatic crops and Fruits & Vegetable crops.

DOSAGE OF NIMATOCARE

- Foliar Application is recommended Nano dose 10gm/100 gm /Acre.

AVAILABLE VARIANT

10 GM / 100 GM NANO POWDER FORMULATION

DOSE :

1 TO 2 SACHET FOR 1 ACER /
2 TO 3 SACHET FOR 1 HECTOR

CERTIFICATES AVAILABLE

COA / MSDS REPORT / TEST REPORTS/ CIB RC REGISTERD
(BIO sachet Over dose has no side effects)

APPLICATION METHOD HOW TO
USE REFER PAGE NO. 8

BIO FUNGICIDES AND BIO BACTERICIDES



GROW BACILY (BACILLUS SUBTILLIS)

GROW BACILY is a bio fungicide and Plant growth promoting rhizobacteria (PGPR), which colonizes on roots and protects the root system of the plant. It hinders spore germination in plant pathogens and prevents pathogens from attaching to the plant, out competing other soil microbes making it exceptional for soil borne fungal diseases and on leaves and fruit diseases. Bacillus Subtillis can produce a variety of materials with antibacterial and bacteriostatic activities during the growth process, such as Subtillis, organic acids, antibacterial proteins, etc.

BENEFITS OF GROW BACILY

- It is substances can inhibit the growth and reproduction of pathogenic bacteria and even destroy the bacterial structure and kill Pathogens.
- It is controls disease-causing pathogens like pythium, Alternaria, and sclerotium, sclerotinia which cause root rot, root wilt, seeding rot, early blight leaf spot, and mildew disease in crops.
- It is persists in the environment and protects the crops effectively from fungal and bacterial pathogens.
- It is not only directly inhibits plant pathogenic bacteria but also enhances plant disease resistance by inducing the plant's disease resistance potential.

AVAILABLE VARIANT

10 GM / 100 GM NANO POWDER FORMULATION
(BIO sachet Over dose has no side effects)

DOSE : 1 TO 2 SACHET FOR 1 ACER / 2 TO 3
SACHET FOR 1 HECTOR

CERTIFICATES AVAILABLE

COA / MSDS REPORT / TEST REPORTS/ CIB RC REGISTERD

APPLICATION METHOD HOW TO
USE REFER PAGE NO. 8



GROW SUDON (PSEUDOMONAS FLUORESCENS)

GROW SUDON is a bio- fungicide in Powder formulation that contains Pseudomonas fluorescens has the special ability to enter the plant vascular system, reach the various parts of the plant system and act as a systematic bio control agent against various fungal and bacterial diseases. They help in uptake of nutrient and also produce plant growth promoting substances. Iron chelating siderophore antibiotic, hydrogen cyanide and lytic enzymes (Cellulase, Chitinase and protease) produced by Pseudomonas are directly involved in the reduction of plant pathogen and induce plant resistance.

BENEFITS OF GROW SUDON

- protect crops from a number of soil borne / seed borne plant pathogens.
- specific to the plant pathogens and eco-friendly in nature.
- induces resistance in crop plants also.
- helps in controlling pathogenic nematodes present in the soil.
- promotes plant growth by PGR activity.
- It can be applied through soil or foliar spray.

TARGET CROPS

Vegetable crops, Oil-seeds, Cotton, Paddy, Maize,
Rice, Pulses, Sugarcane, Ornamental crops Fruit crops.

CERTIFICATES AVAILABLE

COA / MSDS REPORT / TEST REPORTS/
CIB RC REGISTERD

TARGET PYTHOGEN

Fusarium oxysporum, Verticillium dahlia, Phytophthora
infestans, Pythium aphanidermatum, Rhizoctonia solani,
Botrytis cinerea, Sclerotium rolfsii, Xanthomons campestris

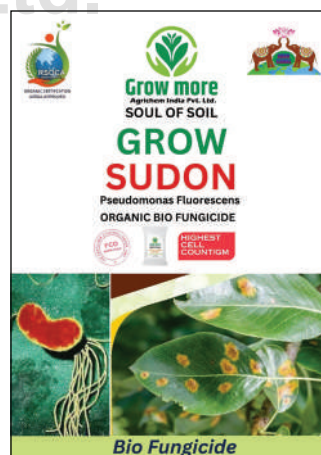
DOSE :

1 TO 2 SACHET FOR 1 ACER /
2 TO 3 SACHET FOR 1 HECTOR

AVAILABLE VARIANT

10 GM / 100 GM NANO POWDER FORMULATION
(BIO sachet Over dose has no side effects)

APPLICATION METHOD HOW TO
USE REFER PAGE NO. 8





GROW BACTO CARE (BENEFICIAL MICRO-ORGANISMS CONSORTIA)

Grow Bacto care produce group of antibiotics, which helps to compete with other plant pathogenic microorganisms by either killing them or suppressing their growth, it also has direct fungicidal and bactericidal affects.

The combination of two most widely used bacteria (*Pseudomonas fluorescense* & *Bacillus Subtilis*). The organisms in Bacto Care produce antibiotics during sporulation and these antibiotics help to compete with other diseases causing microorganisms by either killing them or reducing their growth rate and also have direct fungicidal activity on fungal pathogens. Bacto Care also support plant growth by producing phytotoxic substances which help in the growth and development of plants.

MODE OF ACTION

Grow Bacto care controls rice blast and sheath blight of paddy potato late & early blight, root rot and stem rot caused by *Sclerotium* and *Rhizoctonia*, wilts caused by *Fusarium* and blights/leaf spots caused by *Alternaria*, *Cercospora* and other fungal & bacterial diseases of cotton, pulses, vegetables, oil-seeds, fruit plants, plantation and floriculture crops.

It is a common PGPR in soil that plays a key role in conferring biotic and abiotic stress tolerance to plants by induced systemic resistance (ISR), biofilm formation and lipopeptide production.

CERTIFICATES AVAILABLE

COA / MSDS REPORT / TEST REPORTS

AVAILABLE VARIANT

10 GM / 100 GM NANO POWDER FORMULATION

DOSE : 1 TO 2 SACHET FOR 1 ACER / 2 TO 3 SACHET FOR 1 HECTOR

(Bio sachet Over dose has no side effects)

APPLICATION METHOD HOW TO USE REFER PAGE NO. 8



GROW TRICHO (TRICHODERMA VIRIDE)

GROW TRICHO *Trichoderma viride* is a biological fungicide that protects crops from soil-borne fungal diseases caused by organisms like *Fusarium*, *Rhizoctonia*, *Pythium*, *Sclerotinia*, and *Verticillium*. It can be used throughout the crop cycle, from sowing to harvesting, and is suitable for a variety of crops.

BENEFITS OF GROW TRICHO

- Induces Plants To Turn On Their Native Defense Mechanisms Against Pathogen And Also Act As Antagonistic Agent.
- Reduces Chemical Fungicides Application Therefore Cost Effective And Environment Friendly.
- Both Curative And Preventive Against Fungal Diseases
- Induces Natural Plant Resistance Against Bacterial And Fungal Pathogens (Sar)
- Contains Growth-promoting Substances For Seed Sprouting And Plant Growth
- Increases Plant Resistance To Environmental Stress And Boosts Yield.
- Safe For Natural Predators And Parasites A Natural, Sustainable, And
- Harmless Bio-fungicide For Farmers.

TARGET CROPS

Fruit crops, cotton, groundnut, Paddy, Wheat, Maize, Pulses, Oil seeds, Cotton, Sugarcane, Tomato, Chilly, Capsicum, Cabbage, All Crops

TARGET PATHOGEN

Pythium aphanidermatum, *Rhizoctonia solani*, *Fusarium oxysporum*, *Sclerotinia rolfsii*, *Macrophomina phaseolina*, *Cephalosporium spp*, *Sclerotium Rolfsii*, *Phytophthora infestans*, *Meloidogyne incognita* (root knot-nematodes)

AVAILABLE VARIANT

10 GM / 100 GM NANO POWDER FORMULATION

(BIO sachet Over dose has no side effects)

DOSE : 1 TO 2 SACHET FOR 1 ACER / 2 TO 3

SACHET FOR 1 HECTOR

CERTIFICATES AVAILABLE

COA / MSDS REPORT / TEST REPORTS/ CIB RC REGISTERD

APPLICATION METHOD HOW TO

USE REFER PAGE NO. 8





GROW HARZIA (TRICHODERMA HARZIANUM)

GROW HARZIA *Trichoderma harzianum* 1% WP is a powder formulation containing the live spores and mycelia of *Trichoderma harzianum*. It is a good bio-fungicide recommended for seed treatment, soil and foliar application. Various fungal diseases like botrytis, Fusarium, Penicillium, pithium, etc could be controlled by using GROW HARZIA.

BENEFITS OF GROW HARZIA

- Protects the plants from soil borne and select foliar diseases.
- Controls pathogenic fungi effectively through parasitism, antibiotic and lytic enzyme production and substrate competition.
- Control's nematodes and facilitates mobilization of phosphates and other micro-nutrients. Protects the plants from drought as it facilitates root growth.
- It can be used on agriculture, horticulture, forestry, medicinal and aromatic plants, avenue plantations and floriculture crops/plants.

TARGET CROPS

It has a wide range of activity and used in paddy, maize, rice, pulses, vegetable crops, oil seeds, cotton, ginger, turmeric, cardamom, tea, coffee and fruits crop etc.

TARGET PATHOGEN

Pythium aphanidermatum, *Rhizoctonia solani*, *Fusarium oxysporum*, *Sclerotinia rolfsii*, *Macrophomina phaseolina*, *Cephalosporium spp*, *Sclerotium Rolfsii*, *Phytophthora infestans*, *Meloidogyne incognita* (root knot-nematodes)

AVAILABLE VARIANT

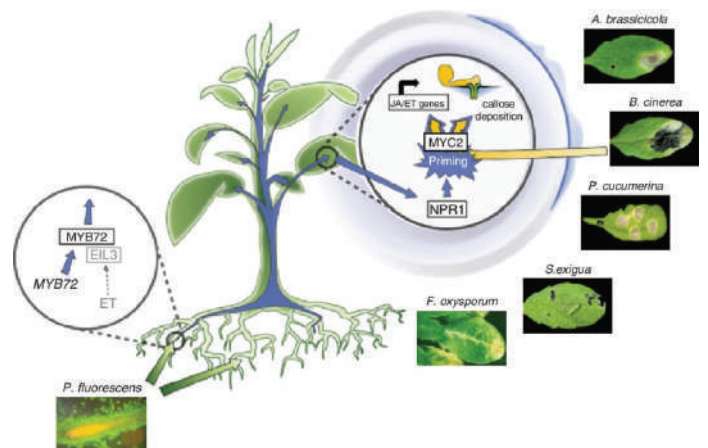
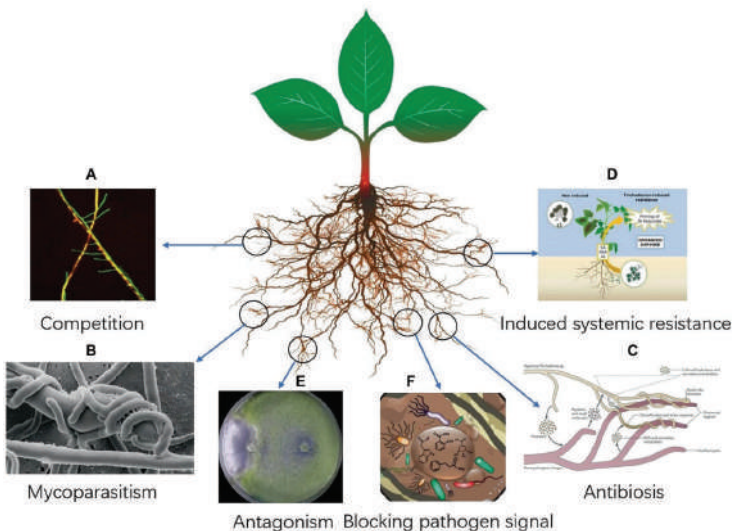
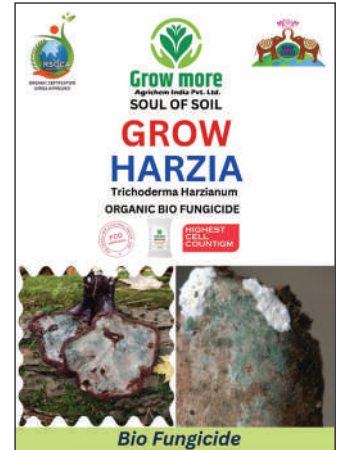
10 GM / 100 GM NANO POWDER FORMULATION
(BIO sachet Over dose has no side effects)

DOSE : 1 TO 2 SACHET FOR 1 ACER / 2 TO 3
SACHET FOR 1 HECTOR

CERTIFICATES AVAILABLE

COA / MSDS REPORT / TEST REPORTS/ CIB RC REGISTERD

APPLICATION METHOD HOW TO
USE REFER PAGE NO. 8



BIO INSECTICIDE



GROW BOT (BACILLUS THURINGIENSIS)

Grow Bot *Bacillus thuringiensis* (Bt) is a gram-positive spore-forming bacterium that has gained significant attention and use in agriculture and pest management. It is a naturally occurring soil bacterium found in various habitats worldwide. Genetic engineering techniques have been employed to enhance the insecticidal properties of Grow bot. Genes have been isolated from BT and introduced into crop plants, resulting in genetically modified crops with built-in resistance to certain insect pests. These crops, such as BT cotton and BT corn, have demonstrated effective control of target pests, reducing the reliance on chemical insecticides.

BENEFITS OF GROW BOT

- Grow Bot It is highly specific and does not show any adverse effects on humans and animals.
- Organic Pest Control: Widely utilized by organic farmers for decades to control crop-eating insects without chemical pesticides.
- Grow Bot Acts powerfully as a phosphate-solubilizing bacterium, enhancing nutrient availability for plants.
- Grow Bot supplemental pest control by preserving or enhancing populations of beneficial organism's.
- Grow Bot Helps in increasing the yield of the crops without any infestation.



TARGET CROPS

cabbage, Broccoli, potatoes, corn, cotton Turnip, greens vegetables, Cauliflower, melons, Cotton, Corn, lettuce, tomatoes, , guava, and other recommended crops.

TARGET PESTS

European corn borer, South western corn borer, Tobacco bud-worm, Cotton boll-worm, Pink boll-worm, Coddling moth, Colorado potato beetle, Orders-

DOSAGE OF BACILLUS THURINGIENSIS

Foliar Application is recommended
Nano dose 10gm/100 gm /Acre.

AVAILABLE VARIANT

10 GM / 100 GM NANO POWDER
FORMULATION

DOSE :

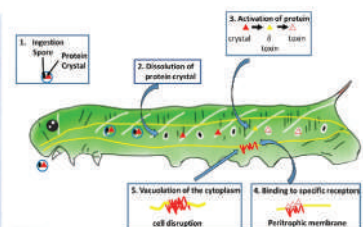
1 TO 2 SACHET FOR 1 ACER /
2 TO 3 SACHET FOR 1 HECTOR

CERTIFICATES AVAILABLE

COA / MSDS REPORT / TEST REPORTS/ CIB RC REGISTERD

APPLICATION METHOD HOW TO
USE REFER PAGE NO. 8

(BIO sachet Over dose has no side effects)





GROW META (METARHIZIUM ANISOPLIAE)

GROW META *Metarhizium anisopliae* is an entomopathogenic fungus that infects insects that come in contact with it. Once the fungus spores attach to the surface of the insect, germinate and begin to grow, they then penetrate the exoskeleton of the insect and grow very rapidly inside the insect causing the insect to die. Other insects that come in contact with infected insects also become infected with the fungus

BENEFITS OF GROW META

- It effectively controls the economically important crop pests in agriculture.
- It is pet friendly, infant friendly, eco-friendly and helps to maintain the ecological balance.
- It helps in Pest reduction that leads to improved plant health and thereby increase in crop productivity.
- It does not cause harm to the beneficial parasites and useful predators, thus provides long lasting control.
- It shows excellent potential for management of thrips in various crop ecosystems.
- It can also be applied at harvest stage.

TARGET CROPS

Fruit crops, groundnut, Paddy, Wheat, Maize, Pulses, Oil seeds, Cotton, Sugarcane, Tomato, Chilly, Capsicum, Cabbage, Cauliflower, Cucurbits, Beans, Pea, Potato, Cardamom, Apple, Grapes, Citrus, Mango, Guava, Papaya, Pomegranate, Cumin, Ginger, Tea and Plantation crops.etc.

TARGET PATHOGEN

Root weevils, Black vine weevil, Spittle-bug, White grubs, Termites, Japanese, beetle, Caterpillar, Semi loppers, Borers, Cutworm

SUCKING PESTS LIKE

Pyrilla, Mealy bugs, Aphids.

AVAILABLE VARIANT

10 GM / 100 GM NANO POWDER FORMULATION
(BIO sachet Over dose has no side effects)

DOSE :

1 TO 2 SACHET FOR 1 ACER / 2 TO 3 SACHET FOR 1 HECTOR

CERTIFICATES AVAILABLE

COA / MSDS REPORT /
TEST REPORTS/ CIB RC REGISTERD

APPLICATION METHOD HOW TO USE REFER PAGE NO. 8





GROW BASILINA (BEAUVERIA BASSIANA)

GROW BASILINA is a biological insecticide based on a selective strain of naturally occurring entomo pathogenic fungus Beauveria Bassiana the spores of the fungus when comes in contact with the cuticle of the target pest insect it germinates and grows directly through the spiracle in the cuticle into the inner body of the host, by taking nutrients from the insect proliferates, produces a toxin called Beauvericin that weakens the host's immune system. and colonizes the entire insect, thus drains the nutrients and the infected insects dies. After the insect dies, an antibiotic is produced that enables the fungus to out compete intestinal bacteria.

BENEFITS OF BASILINA

- **Natural Pest Control:** Effective against various insect pests.
- **Environmentally Friendly:** Safe for the environment, non-toxic to humans and animals.
- **Versatility:** Available in different forms for various applications.
- **Residual Effectiveness:** Provides longer-term pest control.
- **Low Impact:** Minimal harm to beneficial insects.
- **Resistance Management:** Helps manage pest resistance to chemicals.
- **Biodegradable:** naturally degrades without environmental harm.
- **Organic Farming Compatibility:** Approved for use in organic farming.

TARGET CROPS

Papaya, Grape, Guava, Custard apple, Sapota (Chikoo), Chillies, Cotton, Sorghum, Cereals, Millet, Pulses, Oil-seeds, Fiber Crops, Sugar Crops, Forage Crops, Plantation crops, Vegetables, Fruits, Spices, Flowers, Medicinal crops, Aromatic Crops, Orchards and Ornamentals.

TARGET PATHOGEN

White-flies, Thrips, Aphids, Jassids and Mealy bugs

SPECIAL FEATURES:

GROW BASILINA effectively controls most of the economically important pests such as borers, cut worms, root grubs, leaf hoppers, white fly, and mealybug. GROW BASILINA helps to increase productivity by improving crop health through containing the pests.

SUCKING PESTS LIKE

Pyrilla, Mealy bugs, Aphids.

AVAILABLE VARIANT

10 GM / 100 GM NANO POWDER FORMULATION

(BIO sachet Over dose has no side effects)

CERTIFICATES AVAILABLE

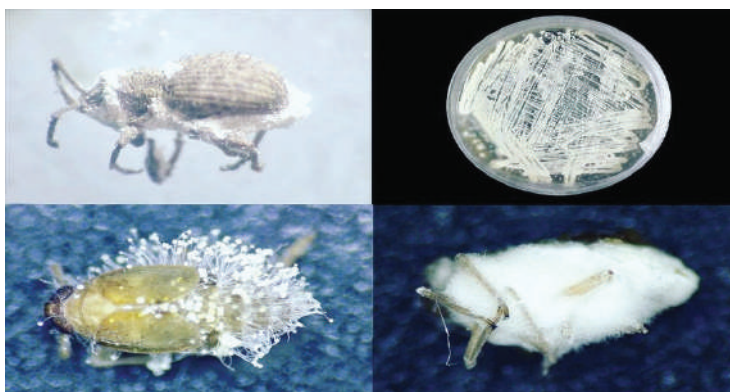
COA / MSDS REPORT / TEST REPORTS/ CIB RC REGISTERD

DOSE :

1 TO 2 SACHET FOR 1 ACER / 2 TO 3 SACHET FOR 1 HECTOR

APPLICATION METHOD HOW TO

USE REFER PAGE NO. 8





GROW VERTILEC (VERTICILLIUM LECANII)

Grow Vertilec is a biological insecticide based on a selective strain of naturally occurring entomo pathogenic fungus *Verticillium Lecanii*. It contains spore and mycelia fragments of *Verticillium Lecanii*, the spores of the fungus when comes in contact with the cuticle of the target pest insect it germinates and grows directly through the spiracle in the cuticle into the inner body of the host, by taking nutrients from the insect proliferates and colonizes the entire insect and thus drains the insect of nutrients and the infected insects dies. *Verticillium* infects the insect on contact and does not need to be consumed by the host to cause infection.

BENEFITS OF GROW VERTILEC

- Verticillium Lecanii is a fungal biological control agent that is effective against sucking insects like aphids, thrips, and white-flies.
- It is commonly used in agriculture to control pest infestations without the use of harmful chemicals.
- Verticillium Lecanii works by infecting and killing pest insects.
- The spores of the fungus attach to the insect's cuticle, germinate, and penetrate the body, causing the insect to die.
- The dead insects become covered in white fungal mycelium, which further spreads the fungus to other insects.
- When applied to plants, *Verticillium Lecanii* can provide long-lasting control of pest insects without harming beneficial insects or the environment.
- It is important to note that the effectiveness of the product can be influenced by environmental conditions such as temperature, humidity, and sunlight.



TARGET CROPS

Papaya, Grape, Guava, Custard apple, Sapota (Chikoo), Chilies, Cotton, Sorghum, Cereals, Millet's, Pulses, Oil-seeds, Fiber Crops, Sugar Crops, Forage Crops, Plantation crops, Vegetables, Fruits, Spices, Flowers, Medicinal crops, Aromatic Crops, Orchards and Ornamentals.

TARGET PESTS

White-flies, Thrips, Aphids, Jassids and Mealy bugs

Grow more
Agrichem India Pvt. Ltd.

DOSAGE OF GROW VERTILEC

Foliar Application is recommended Nano dose 10gm/100 gm /Acre.

AVAILABLE VARIANT

10 GM / 100 GM NANO POWDER FORMULATION

DOSE :

1 TO 2 SACHET FOR 1 ACER / 2 TO 3 SACHET FOR 1 HECTOR

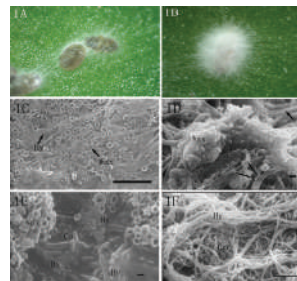
CERTIFICATES AVAILABLE

COA / MSDS REPORT / TEST REPORTS/ CIB RC REGISTERD

APPLICATION METHOD HOW TO

USE REFER PAGE NO. 8

(BIO sachet Over dose has no side effects)



PGR/BIO-STIMULANTS



GROW RICH

Grow Rich is a balanced multi-nutrient product containing all essential plant nutrients-easily absorbable by the plants. It considerably increases the crop yield both by quality and quantity with just two foliar applications or drip application. It can be used on all field, vegetable, horticulture and plantation crop.

BENEFITS OF GROW RICH

- Increases the initial vigour of plants and induces disease & pest resistance.
- Helps plants to resist changes in environment like stress in a better way.
- Improves the growth, yield and quality of the produce significantly.
- Encouraging visual effects can be seen within 6-7 days after the spray of Grow more Grow Rich.
- Compatible with majority of pesticides, fungicides and fertilizers that are commonly used.

APPLICATION & DOSAGE :

- FOLIAR APPLICATION :** 2.5 ml per litre of water
 - DRIP APPLICATION :** 1 litre per acer
- For better results, it is advisable to use 1 to 3 applications.



ALL CROPS



BOOSTER PLUS

Booster Plus is formulated from Australian Seaweed and Ascophyllum species which contains more organic matter in solids form with trace elements.

BENEFITS OF BOOSTER PLUS

- Booster Plus induces resistance to diseases by catalyzing the enzymatic related actions, which in turn maintains a healthy plant and produce.
- Booster Plus it is quickly absorbed by the plant and the nutrients are easily available.
- Booster Plus it induces more flowering and helps in fruit setting.
- Booster Plus increase in lateral and white root population and improves the nutrient uptake.
- Booster Plus improves beneficial soil flora and fauna.
- It improves resistant of plant in abiotic and biotic stress conditions.
- Its improves the water holding capacity of soil and develop soil texture and structure.
- Point (It Can Be Mixed With Most Common Used Fertilizers, Insecticides, Fungicides And Herbicides)

APPLICATION & DOSAGE :

- FOLIAR APPLICATION :** 2.5 ml per litre of water
 - DRIP APPLICATION :** 1 litre per acer
- For better results, it is advisable to use 1 to 3 applications.
- 1st application : Before flowering.
2nd application : At flowering/full bloom.
3rd application : At fruit development stage.
4th application : At 2 weeks after 3rd application.



ALL CROPS



Dr. Root Grow

DR ROOTS GROW is a liquid form Formulation containing Humic substances and some natural growth promoters like fulvic acid, vitamins, amino acid and cytokines derived from plants and animals origin sources . It activates physiological processes helping in enhanced flowering and ensuring increased fruit size.

BENEFITS OF DR ROOTS GROW

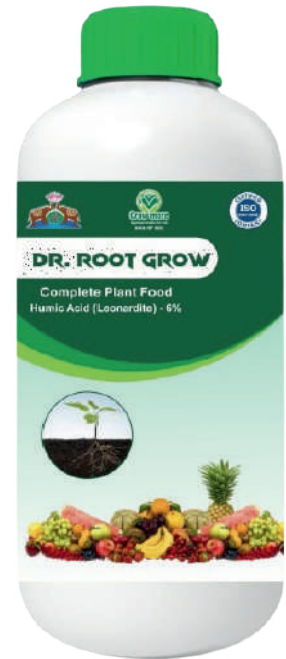
- Dr. Root Grow activate natural microflora in the soil & rhizosphere of the plant & are excellent means to enhance natural microbial population.
- It helps improve, physical, chemical & biological properties of soil with increasing crop yield by 25 to 30%.
- It induces sprouting and flowering.
- It breaks dormancy & favours germination rooting.
- It maintains ambient temperature rigidity of exposed plant parts.

DOSAGE:

- (APPLICATION VIA DRIP / FLOOD IRRIGATION 1 TO 2 LITER PER ACER)

WHEN TO BE USED

- After Plantation And As Per Recommended Crop Schedule



ALL CROPS



AMINOMORE

Aminomore is unique research product derived from vegetable plant origin extracts used for plant growth. Aminomore is useful for fruit size & flower setting in all variety of fruits. It helpful for dipping practices-in Grapes. It helps for increasing yield, keeping Quality of fruits,size,luster as well as taste.

BENEFITS OF AMINOMORE

- It stimulates chlorophyll formulation Increase the size and weight of the berry and fruit.
- It increase resistance power of the plant against pest & disease.
- The application of Aminomore affects plant growth, mineral nutrition, tolerance to abiotic stresses, and microbial community of rhizosphere.
- These products boost the growth of shoot and roots due to the presence of growth stimulation peptides and amino acids Aminomore can also increase other quality attributes of fruits like colour, aroma, taste .

DOSAGE AND METHOD OF APPLICATION:

Dissolve 2.5 ml of Aminomore in one litre of water and spray on both surface of the leaves.

APPLICATION VIA DRIP / FLOOD IRRIGATION 1 TO 2 LITER PER ACER)

FIRST SPRAY :

30 -35 days after germination.

SECOND SPRAY :

15 days after first spray.



ALL CROPS



GROW RHIZA (Mycorrhiza)

Mycorrhizal fungi are naturally-occurring, symbiotic and beneficial soil fungi that attach to plant roots and essentially become a living extension of the root system, dramatically expanding access to moisture and nutrients from the soil environment. In return, the host plant feeds the fungi with sugars and other organic substances that the Fungi need to survive and grow.

AVAILABILITY

DOSE : 4 to 8 kg per acer

PER ACRE REQUIRED : 4 kg to 8 kg (bio fertilizer over does has no side effects)

PACKING AVAILABLE FOR FERTILIZER

1 sack : 4 kg bag X 10 bag = 1 sack 40 kg.

WHEN TO BE USED

- Soil preparation
- Seed treatment
- As per recommended crop schedule

BENEFITS OF GROW RHIZA

- Improves plant root morphology and its development.
- Increases nutrient uptake in plants and mobilization of phosphate in all crops.
- Increase and facilitate nutrient uptake [elements like nitrogen, phosphorus, potassium, iron, manganese, magnesium, copper, zinc, boron, sulphur and molybdenum] and translocation from the soil through root cuticle parenchyma to different plant parts.
- Enhance product quality and increase immune power of the crop.
- Increased water uptake and greater drought resistance.
- Root colonization by AMF fungi provide protection to plants from parasitic fungi and nematodes.
- Increased seedling survival and faster growth.
- Improves soil structure.
- Survival in high soil temperature, soil toxins and extreme pH levels.

AVAILABLE VARIANT

GRANULE : Per acre required minimum 4 kg, recommended 5 kg

AVAILABILITY : 1 kg. pack, 4 kg. pack, 8 kg. pack

LIQUID : 1 litre / acer



ALL CROPS

CERTIFICATES AVAILABLE

- Certificate of Analysis
- Certified Test Reports
- MSDS Report



URJA (PROM)

PROM (Phosphate Rich Organic Manure) is a organic fertilizer that is the substitute of DAP, MAP and SSP fertilizer. The chemical fertilizer is very serious problem for all, these fertilizers harm the soil as well as the environment. livestock, humans etc.

PER ACRE REQUIRED : Minimum 100 Kg, Recommended 150 To 200 Kg

PACKING AVAILABLE - GRANULE

- 5/10kg Poly Bag
- 50 kg Poly Bag
- 20 kg Poly Bag

WHEN TO BE USED

- Soil Preparation
- As Per Recommended Crop Schedule

BENEFITS OF URJA (PROM)

- Slow Release fertilizer.
- Supplies all nutrients.
- Improves soil physical properties like soil structure and porosity.
- Increases availability of nutrients in soil and plant which gets released during decomposition and helps to reduce alkalinity of soil.
- Binds soil particles into aggregate porosity.
- Increases infiltration and water holding capacity in the soil.
- Reduces soil erosion through better soil structure.
- Acts as buffering agents which helps to reduce damage from excessive acid, alkalinity of soil.
- Helps to mitigate climate change.
- Used in formation of amino acids, proteins and oils.



SAMPURNA (Bio Enriched Organic Manure)

SAMPURNA is well decomposed organic matter fortified with vermicompost, neem cake, castor cake, pongamia cake and enriched with million of beneficial micro organisms. SAMPURNA is rich in humus and free from weed seeds. It is non-toxic, eco friendly and ecologically compatible. This is a well decomposed coco peat based organic manure fortified with neem cake, castor cake, pongamia cake, vermicompost and enriched with various types of beneficial micro-organisms such as Azotobacterial, Azospirillum, Rhizobium; Phosphate solubilizing bacteria; Potash mobilizing bacteria, Trichoderma sp and Pseudomonas, etc.

BENEFITS OF SAMPURNA

- Suitable for all purposes (Veggies, fruits, flowers, trees, lawn, home & office, garden & farm, Indoor & Outdoor, etc).
- 100% organic raw material (Food-grade tapioca is the only raw material source to ensure the stable).
- No Chemical content, no animal product and non-toxic.
- It encourages abundant and tastier crop.
- Encourages stronger root growth and improved plant resistance to environmental stress.
- Helps in improving soil structure, texture and fertility.
- Does not leave harmful residue and does not cause soil pollution.
- Helps in absorption of other nutrients from soil.
- Non toxic and eco-friendly.
- Improve crops quality and stronger and healthier plant growth.
- Acts as a strong repellent to insects and has larvicidal activity.
- Reduces population of nematodes.

PACKING AVAILABLE

- 1/5kg Poly Bag
- 40 kg Poly Bag

WHEN TO BE USED

- Soil Preparation Gardening



ALL CROPS



ALL CROPS

We rise by lifting others



Grow more
Agrichem India Pvt. Ltd.



“IT IS IN YOUR HANDS TO CREATE A BETTER WORLD FOR ALL WHO LIVE IN IT”
- NELSON MANDELA



GROW MORE AGRICHEM INDIA PVT. LTD.

109 Sakar 5, Ashram Road, Ahmedabad 380009. Gujarat, India.

Website – www.growmoreagri.com | Email – info@growmoreagri.com, mygrowmore@gmail.com

Phone: +91 90230 48904, +91 86686 83190, +91 78638 98739, +27 846225383